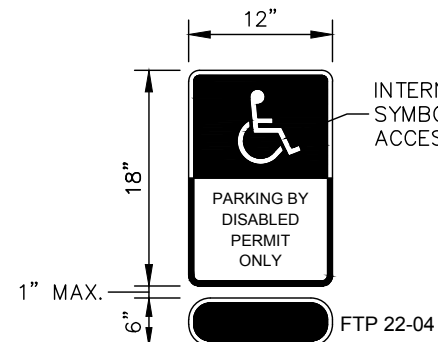


- NOTES:
1. BLUE PAVEMENT MARKINGS SHALL BE TINTED TO MATCH SHADE 15180 OF FEDERAL STANDARDS 595A.
 2. ALL DIMENSIONS ARE TO THE CENTERLINE OF MARKINGS.

HANDICAP STALL PARKING DETAIL

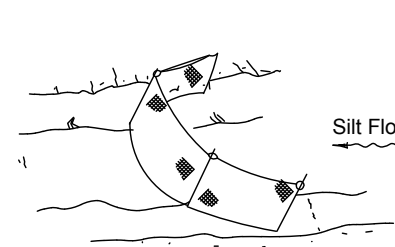
N.T.S.



FTP 20-04 SIGN DETAIL

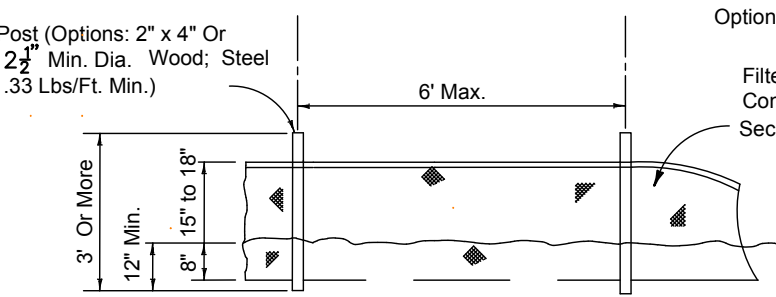
N.T.S.

- NOTES:
1. ALL LETTERS ARE 1" SERIES.
 2. TOP PORTION OF MAIN SIGN SHALL HAVE A REFLECTORIZED BLUE BACKGROUND WITH WHITE REFLECTORIZED SYMBOL AND BORDER.
 3. BOTTOM PORTION OF MAIN SIGN SHALL HAVE A REFLECTORIZED WHITE BACKGROUND WITH BLACK OPAQUE BLOCK LETTERING AND BORDER.
 4. "FINE SIGN" SHALL HAVE A REFLECTORIZED WHITE BACKGROUND WITH BLOCK OPAQUE SERIES "C" BLACK LETTERING AND BORDER.
 5. LETTERS AND NUMBERS ON SIGN SHALL HAVE A WIDTH-TO-HEIGHT RATIO BETWEEN 3.5 AND 1:1 AND A STROKE WIDTH-TO-HEIGHT RATIO BETWEEN 1:5 AND 1:10.
 6. SIGNS SHALL NOT BE OBSCURED BY A VEHICLE PARKING IN THE SPACE.
 7. DISABLED PARKING SPACE SIZE, STRIPING AND SIGN SHALL BE IN ACCORDANCE WITH ALL APPLICABLE CITY, STATE AND FEDERAL REGULATIONS.



SILT FENCE APPLICATIONS

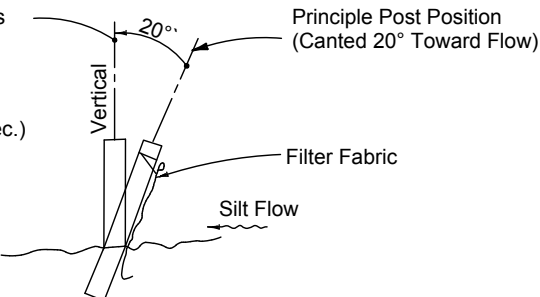
(FDOT INDEX NO. 102, SHT. 3)



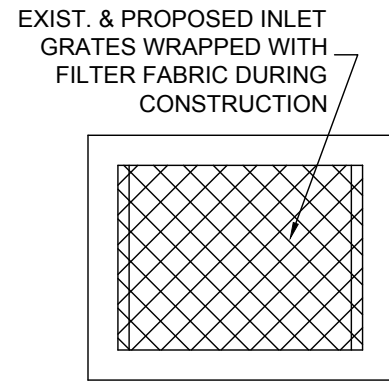
ELEVATION

Note: Silt Fence to be paid for under the contract unit price for Staked Silt Fence (L.F.).

TYPE III SILT FENCE

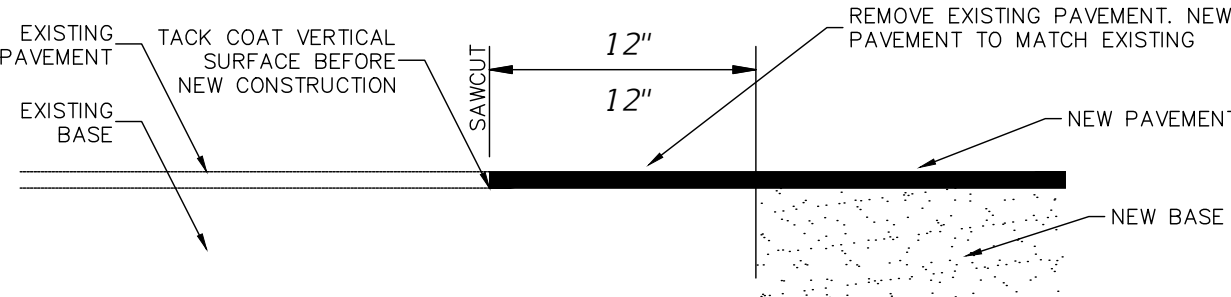


SECTION



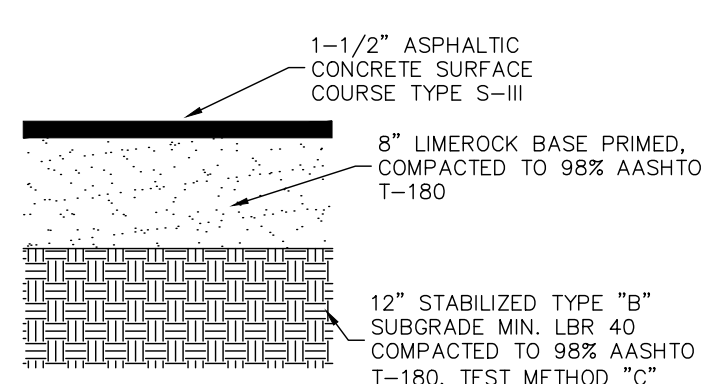
INLET PROTECTION

N.T.S.



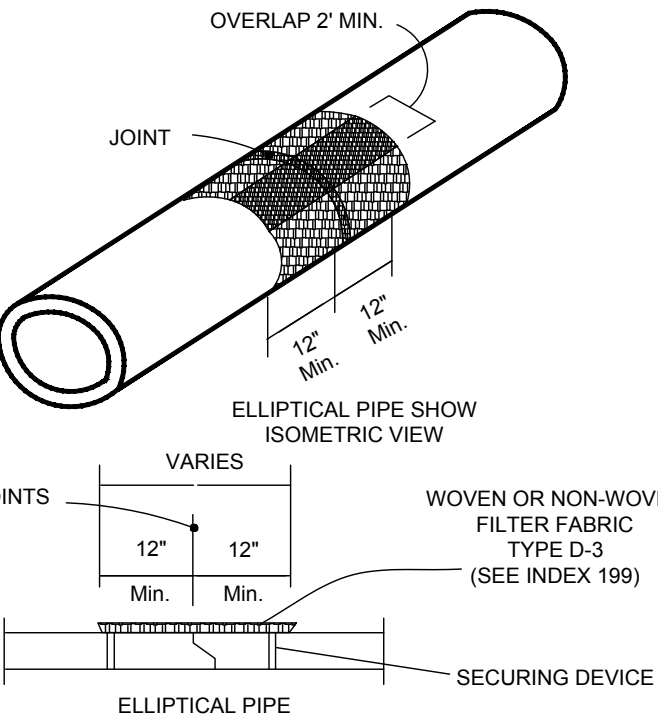
PAVEMENT TIE IN TO EXISTING PAVEMENT

N.T.S.



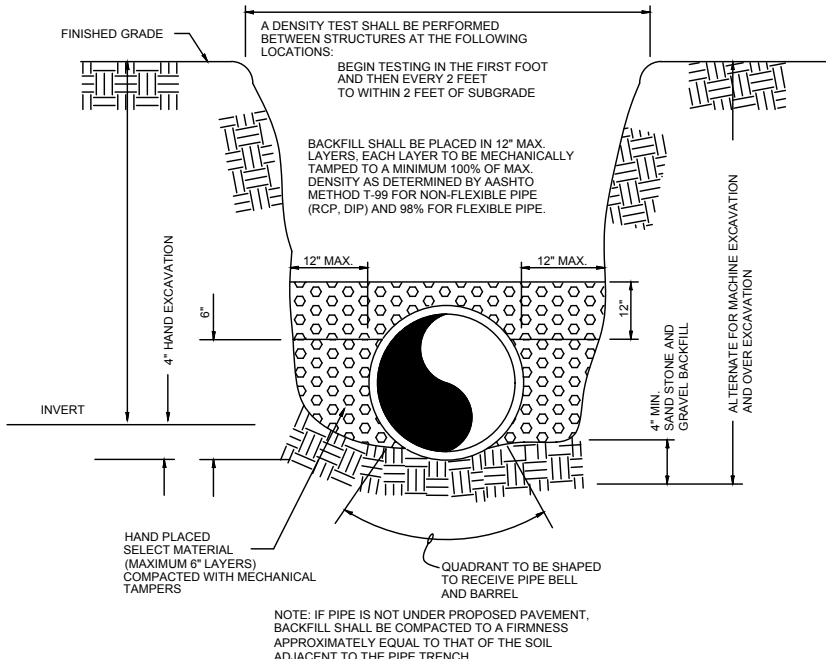
ASPHALT PAVEMENT

N.T.S.



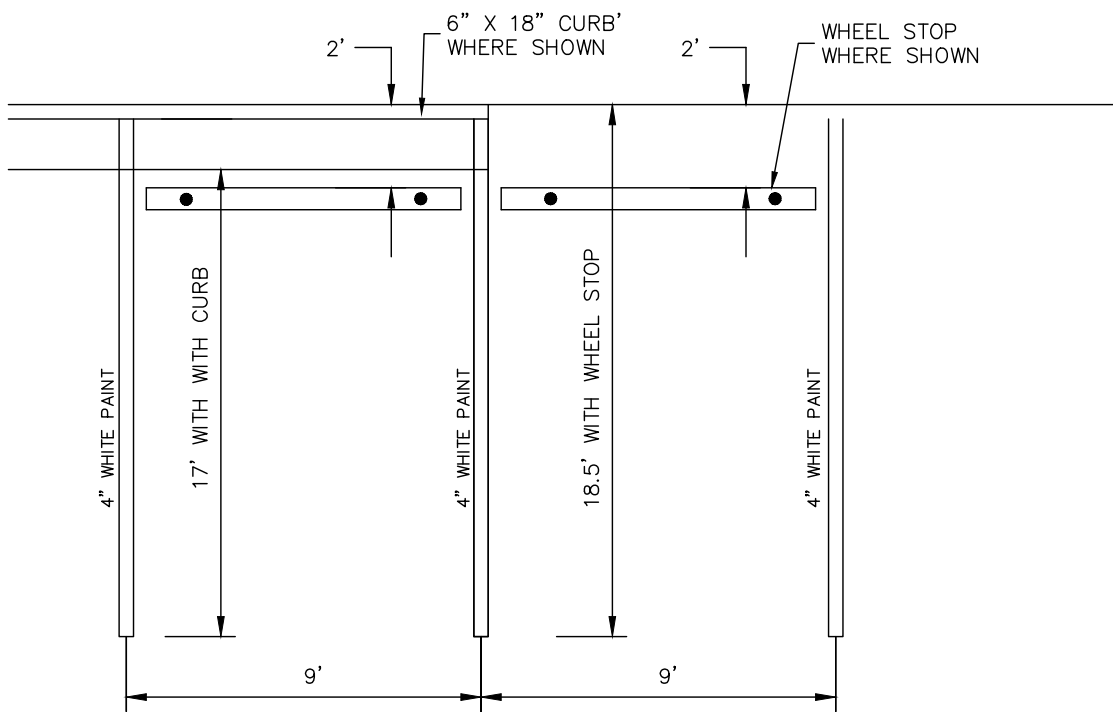
FILTER FABRIC JACKET

N. T. S.



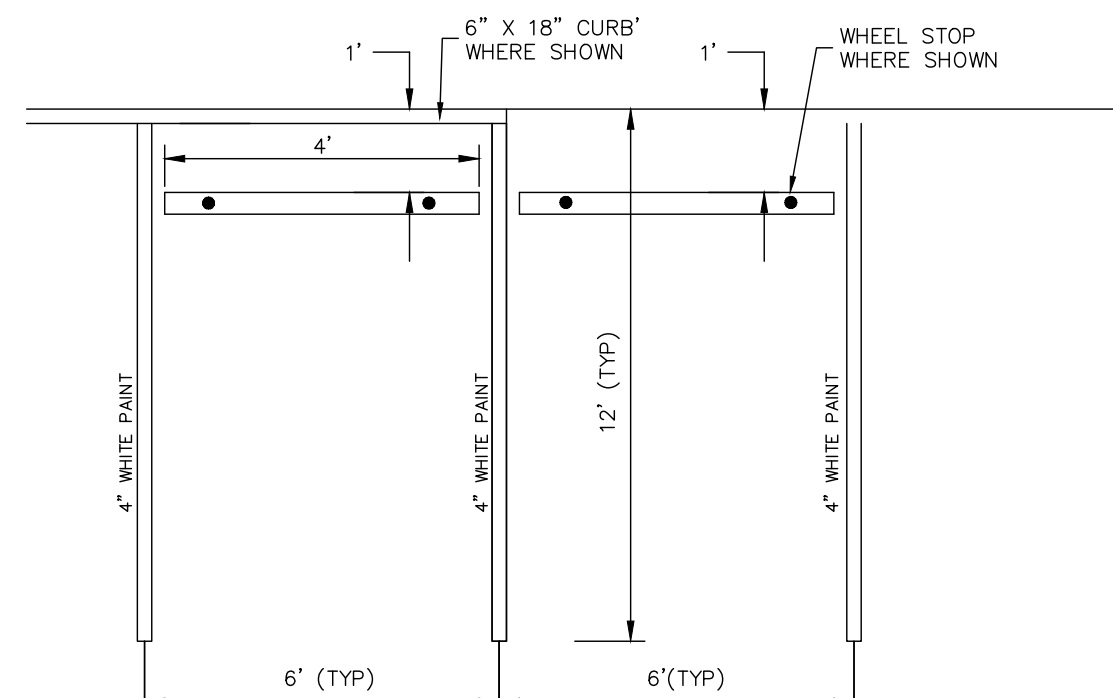
TYPICAL TRENCH DETAIL

N.T.S.



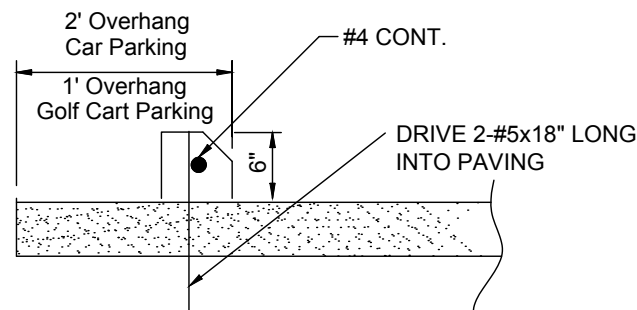
TYPICAL PARKING STALL

N.T.S.



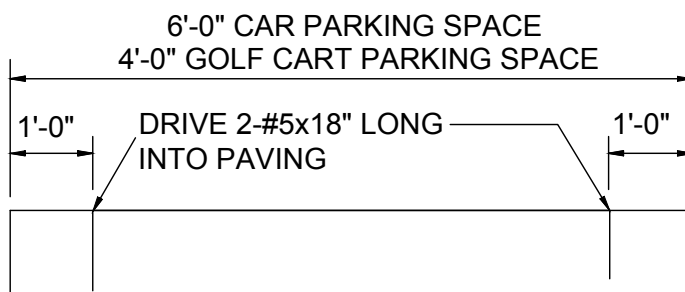
TYPICAL GOLF CART PARKING STALL

N.T.S.



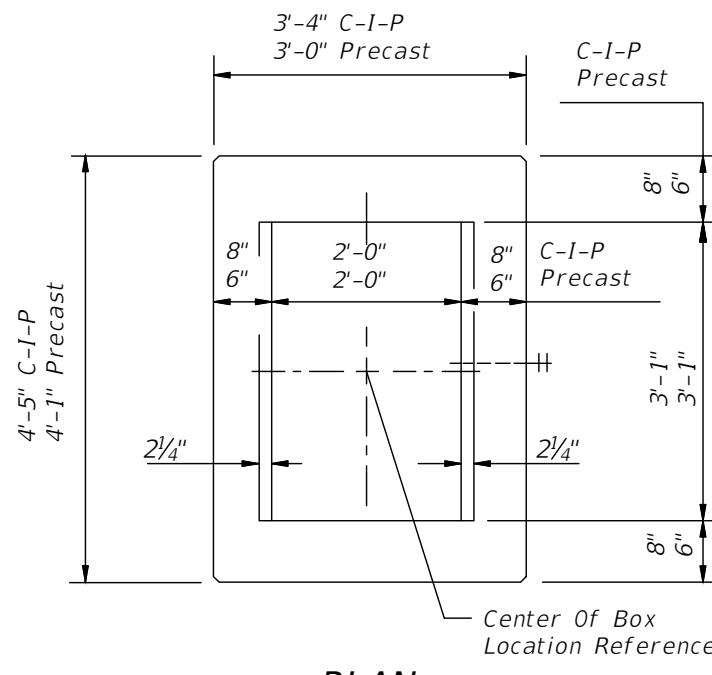
TYPICAL WHEELSTOP DETAIL

N. T. S. FOR PAVED AREAS

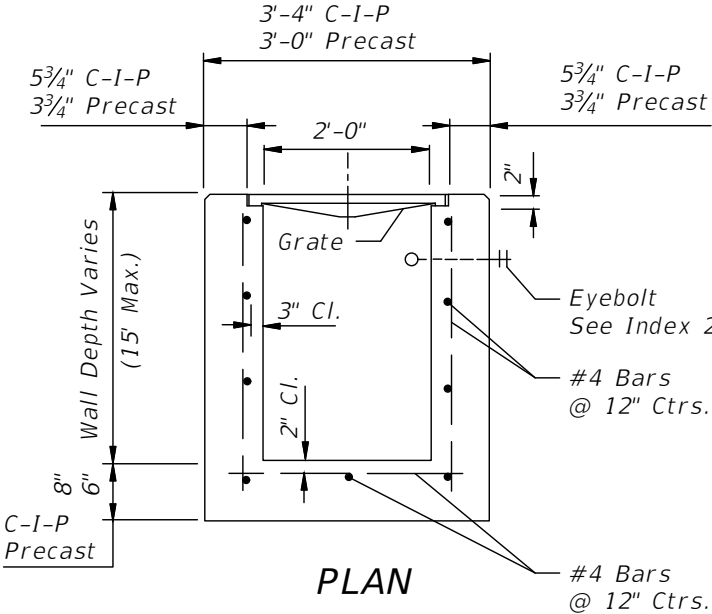


TYPICAL WHEEL STOP

N. T. S.



PLAN

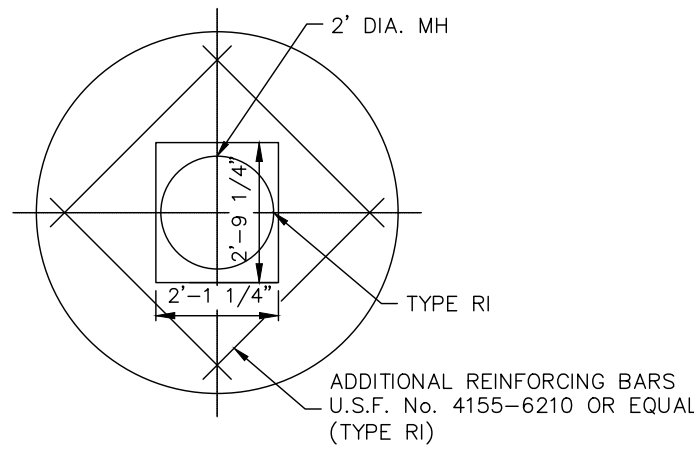


SECTION HORIZONTAL WALL REINFORCING SCHEDULES (TABLE 1)

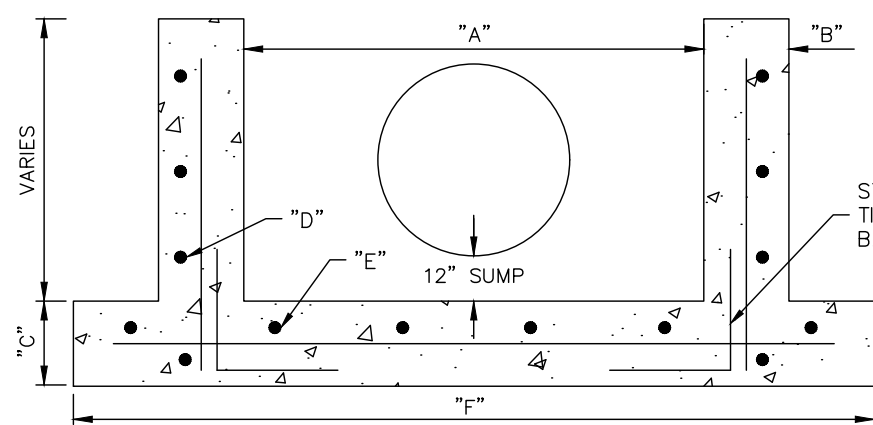
WALL DEPTH	SCHEDULE	AREA (in. ² /ft.)	MAX. SPACING BARS	WWF
0'-15'	A12	0.20	12"	8"

Recommended Maximum Pipe Size:
2'-0" Wall - 18" Pipe
3'-1" Wall - 24" Pipe (18" where an 18" pipe enters a 2'-0" wall)

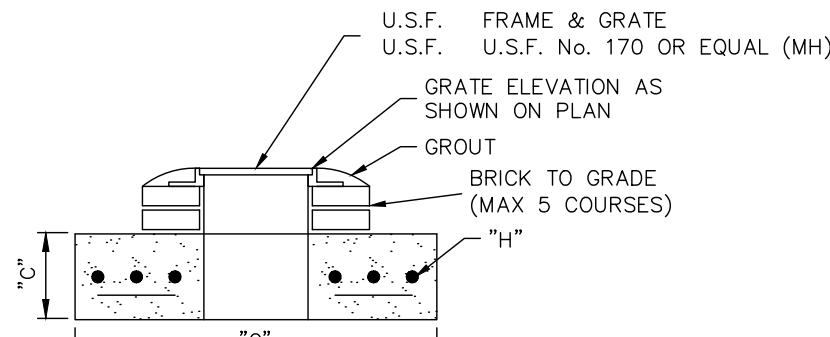
INLET TYPE "C" (REF FDOT INDEX 232) N.T.S.



PLAN



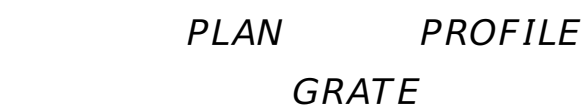
BOTTOM



TYPE "RI" TOP

STORM MANHOLE "RI" ROUND INLET

N.T.S.



GENERAL NOTES FOR INLETS

1. These inlets are suitable for bicycle and pedestrian areas and are to be used in ditches, medians and other areas subject to infrequent traffic loadings but are not to be placed in areas subject to any heavy wheel loads.
2. Inlets subject to minimal debris should be constructed without slots. Where debris is a problem inlets should be constructed with slots. Slotted inlets located within roadway clear zones and in areas accessible to pedestrians shall have traversable slots. The traversable slot modification is not adaptable to inlet Type H. Slots may be constructed at either or both ends as shown on plans.
3. Steel grates are to be used on all inlets where bicycle traffic is anticipated. Steel grates are to be used on all inlets with traversable slots. Either cast iron or steel grates may be used on inlets without slots where bicycle traffic is not anticipated. Either cast iron or steel grates may be used on all inlets with non-traversable slots. Subject to the selection described above, when Alternate G grate is specified in the plans, either the steel grate, hot dipped galvanized after fabrication, or the cast iron grate may be used, unless the plans stipulate the particular type.
4. Recommended maximum pipe sizes shown are for concrete pipe. Pipe sizes larger than those recommended must be checked for fit.
5. All exposed corners and edges of concrete are to be chamfered.
6. Pavement to be used on inlets without slots and inlets with non-traversable slots only when called for in the plans; but required on all traversable slot inlets. Cost to be included in contract unit price for inlets. Quantities shown are for information only.
7. Traversable slots constructed in existing inlets shall be paid for as inlets partial, and shall include the cost for slot openings, paving and any required replacement grates.
8. Sodding to be used on all inlets not located in paved areas and paid for under contract unit price for Sodding SY.
9. For supplementary details see Index No. 201.

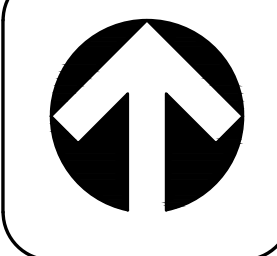
SITE II BOCA WEST RECREATIONAL PUD FLORIDA

LAT 26°22'31.03"N
LO 80° 9'27.71"W
BOCA RATON
PAVING GRADING & DRAINAGE DETAILS

PROJ. NO.: 1942
DRAWN BY: RC
SHEET:
C7.1

SEAL
FL P.E. No. 38799
JONATHAN T. RICKETS

3450 Northlake Boulevard - Suite 200
Palm Beach Gardens, Florida 33403
Phone: (561) 630-6700
Toll - Free: (877) 630-6777
Fax: (561) 625-2770
FL Certificate of Authorization: 6173
NC Certificate of Authorization: C-2761
Jonathan T. Ricketts Inc.
CORPORATE OFFICE - PALM BEACH GARDENS, FLORIDA



Always call 811 two full business days before you dig

